

## Orders -Technology 2 – Online Web Shop

This solution includes integration to the company's ERP system to allow for up-to-date stock information and enables the customer to create their orders, then automatically enters this information into the company's ERP system.

Customers can pick from a discrete number of products; all the order data is inputted by the customer and can be pulled across into a system. The system automatically informs the customer their order has been received and processed.

Pros	Cons
<ul style="list-style-type: none"> <li>• Integrated stock availability and timeframe.</li> <li>• Order data can be integrated directly into ordering system.</li> <li>• Order confirmation to customer can be automated.</li> </ul>	<ul style="list-style-type: none"> <li>• External connectivity to the ordering system is required.</li> <li>• Customer needs to complete web form to order product.</li> <li>• Additional ongoing cost for web-based platform.</li> </ul>

**Technology Cost range:** \$20,000 - \$50,000, depending on how extensive and elaborate the web shop becomes. Additional cost may be incurred in accessing data and designing forms.

**DMC Technology Cost:** \$20,000

### DMC Cost Assumptions:

- Limited to single application
- Existing ERP system with integrated ordering.
- Existing Cyber Security infrastructure and policies for external connection.
- Internal costs for end user staff involvement have not been included.
- Single design and build iteration.

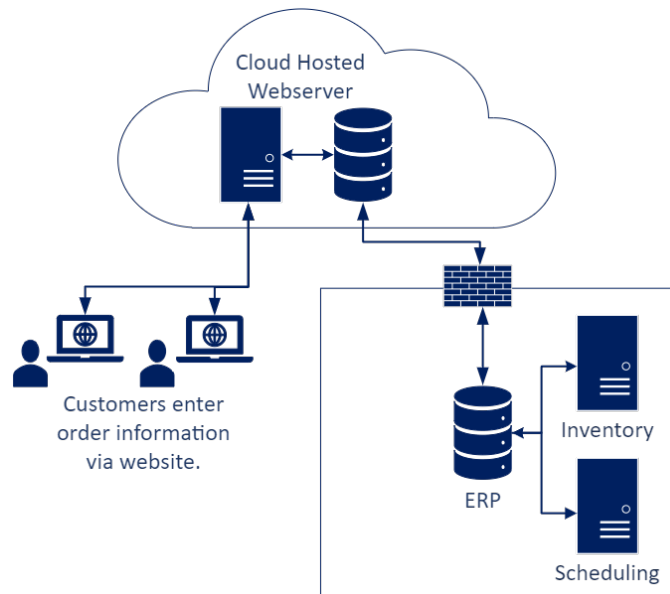
**What situation would this technology usually be adopted in?** Manufacturers with relatively stable product ranges. Many lower to medium value orders (as opposed to few very large orders).

**RoI Considerations:** Saves time for administration staff preventing multiple communication and resolving errors in processing orders. Integration costs with ERP systems to ensure up to date customer details, stock availability and order processing.

**What skills are required to implement & run this tech?** Basic Web Development skills and Integration / System architecture development skills to implement (Companies often use 3rd party web support). No specific internal skills required to maintain.

**Pre-requisites for successful adoption:** Well established master data for products, pricing, and stock. Warehouse management / ERP system for live tracking of stock. An integrated order processing solution as part of the ERP is preferred.

### Typical Tech Stack



### Who can help with this technology?

- System Integrators
- Web Developers

### What to google when researching this technology?

'Set up an embedded online shop on my website'

'ecommerce ERP integration'